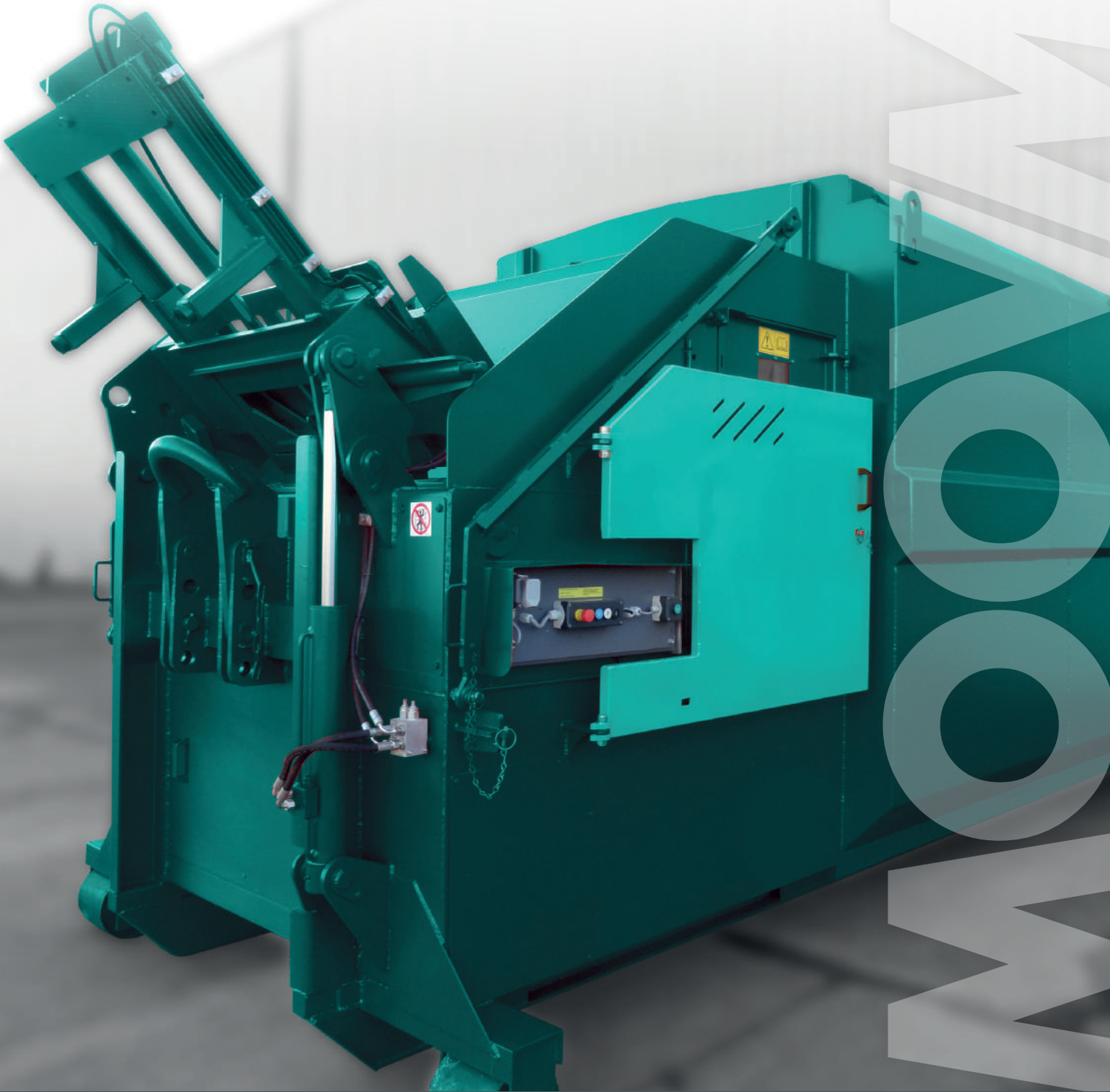


MOOVMOR

ROLOPAK RPW30

WET WASTE PORTABLE COMPACTOR



+353 45 521031



sales@moovmor.com



www.moovmor.com

MOOV/MOR

RPW30 ROLOPAK

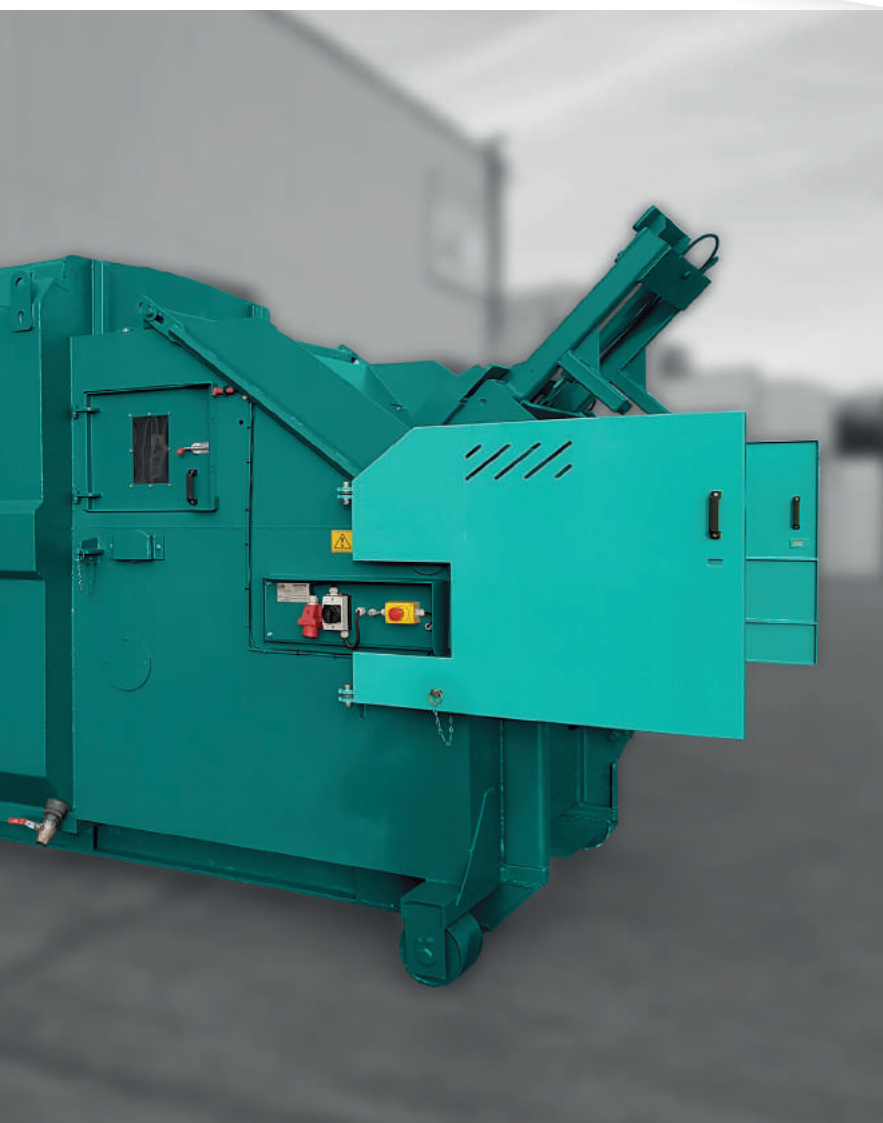
WET WASTE PORTABLE COMPACTOR

OVERVIEW

The Moovmor Rolopak RPW30 Wet Waste compactor is designed specifically where high volumes of liquid residue forms part of the waste. The compactor operates on a swing blade mechanism which assists in keeping the liquids away from the "engine" of the compactor, ensuring a longevity of the hydraulic and electrical components. The RPW can be fitted with drain off valves to assist in removal of the excess liquid into an appropriate discharge point.

STANDARD FEATURES

- All-in-one compactor and container unit
- Liquid retention design
- Swing blade mechanism
- Low level hand loading height for ease of access
- Pre full and bin full warning signals
- Pull out power pack for easy servicing access
- Rear door sealing to retain liquid residue
- Curved rear door for maximum strength
- Ro/Ro chassis and hook built to CHEM specification
- Designed and manufactured to EU machinery directives and certified CE compliant



BENEFITS

- High level of liquid retention
- Designed with maximum operator safety in mind
- Self cleaning swing blade mechanism
- All-in-one unit means no waste escape when emptying
- Low running costs with Moovmor low energy power pack systems
- Low energy carbon footprint
- Easy to operate and load
- Reduced manual handling and risk to staff
- Streamlined operations
- Maximum payload on each lift
- Maximum performance and life long reliability

OPTIONAL FITOUTS



Open top hopper for bulk loading



Bin lift activated bonnet style hopper lid



GSM modules with performance monitoring & notification system



Enclosed hopper with interlocked access door



Through wall chute loading fit out



Drop down A frame for low level loading



Side or front mounted bin tipper for 120 - 1100 litre wheeled carts



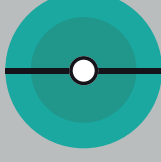
Reverse pick up facility for off dock loading



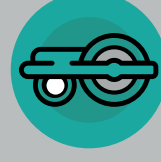
Guide rail and in-floor plates



Fast cycle time option



Single phase option



Additional heavy duty front rollers

RPW30 ROLOPAK PORTABLE COMPACTOR

SPECIFICATION	RPW30 ROLOPAK
COMPACTION FORCE @ 200 BAR (TONNES)	33
MOTOR POWER (KW)	5.5kw, 16A
POWER SUPPLY	3 PH + E + N, 400V, 50Hz or single phase 230v
STD FACTORY SET CYCLE TIME (SECS)	56
CHARGE BOX VOLUME (M ³)	1.5
CHEM VOLUME PER STROKE (M ³)	0.72
CYLINDER BORE (MM)	100 x 2
COMPACTOR LENGTH (MM)	6800
COMPACTOR WIDTH (MM)	2410
COMPACTOR HEIGHT (MM)	2810
CHARGE BOX LOADING HEIGHT (MM)	1500
CHAMBER WIDTH (MM)	1500
CHAMBER LENGTH (MM)	1380
CHAMBER HEIGHT (MM)	1200
COMPACTOR WEIGHT (KG)	4850

Due to company policy of continued product development design and specifications are subject to change without notice. Check with your local distributor or our customer service representative for regional availability within Europe.